



Inform > Engage > Impact

**Community & Member
Meeting**

March 26th 2025

***Results of the 2024
Estero Traffic Survey***



Welcome

Allan Bowditch
Chief Communications Officer.

Results of the 2024 Estero Traffic Study



WELCOME



- **Steve Sarkozy: Estero's Village Manager.**



- **David Willems: Estero's Director of Public Works.**



- **Leah Holmes: Transportation Engineer at Johnson Engineering.**



VILLAGE OF ESTERO

Area-Wide Traffic Study Update

March 2025

Project Background

August 2017

- Initial Area-Wide Traffic Study (Kimley-Horn)
- Assess future 2027 conditions and travel demands
- Increased traffic growth since 2020

2024 Update

- Area-Wide Traffic Study Update (Johnson Engineering)
- Assess future 2034 conditions and travel demands

VILLAGE OF ESTERO

**Area-Wide Traffic
Study Update**

**JOHNSON
ENGINEERING**
— An Apex Company —

Goals & Objectives



Peak Season Traffic Data Collection



Roadway & Intersection Analysis



Crash Data Review



Develop Area-Wide Traffic Study Update

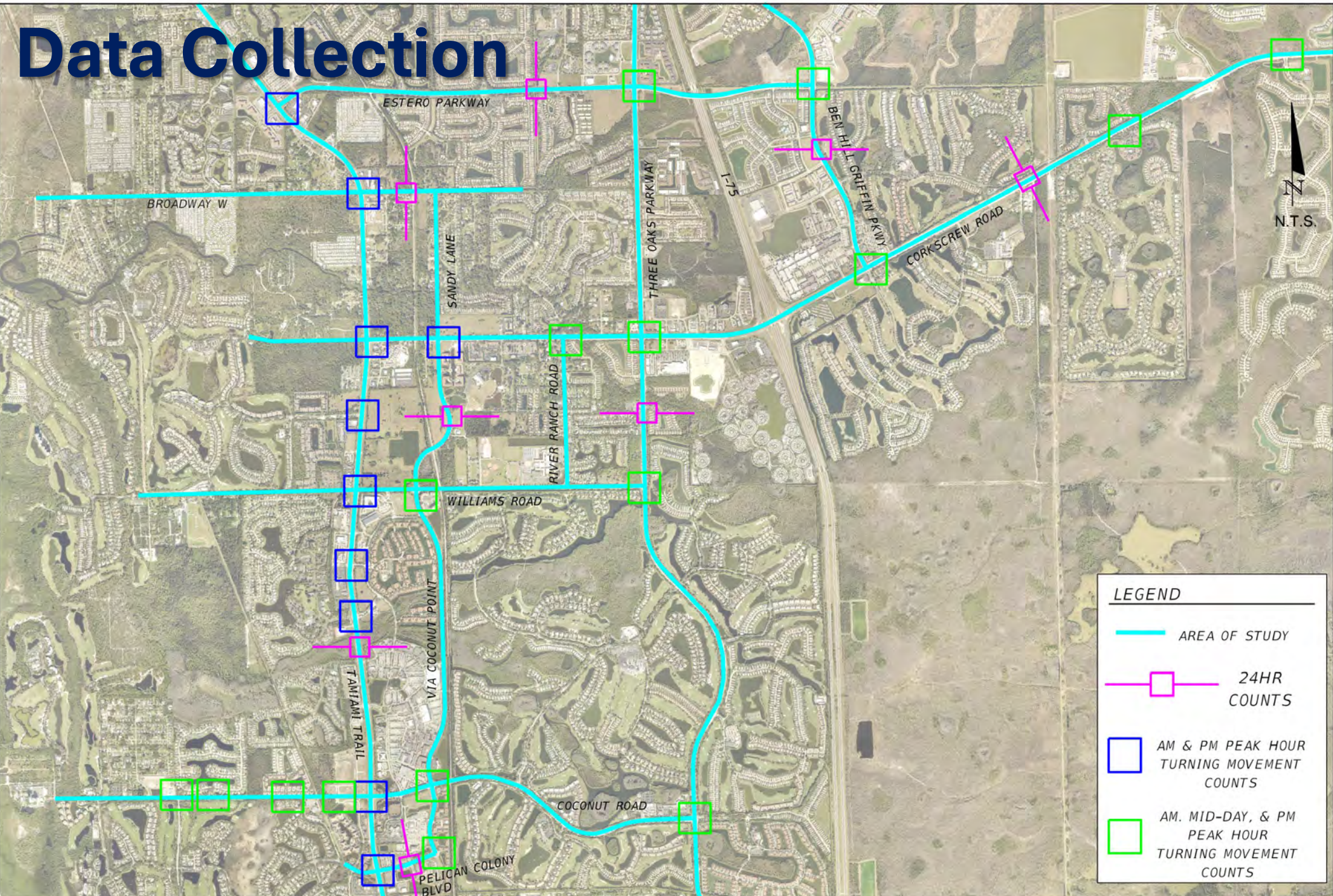


Timeline

January 2024	Project Kick-Off
February/March 2024	Peak Season Data Collection (Traffic and multimodal)
April 2024	Processing of Data
May 2024	Roadway Analysis
July 2024	Traffic Modeling (Intersection Analysis)
October 2024	Crash Data Processing and Review
November 2024	Draft Report/ Preliminary Findings
March 2025	Summary of Draft Findings Presentation
April 2025	Final Report & Recommendations

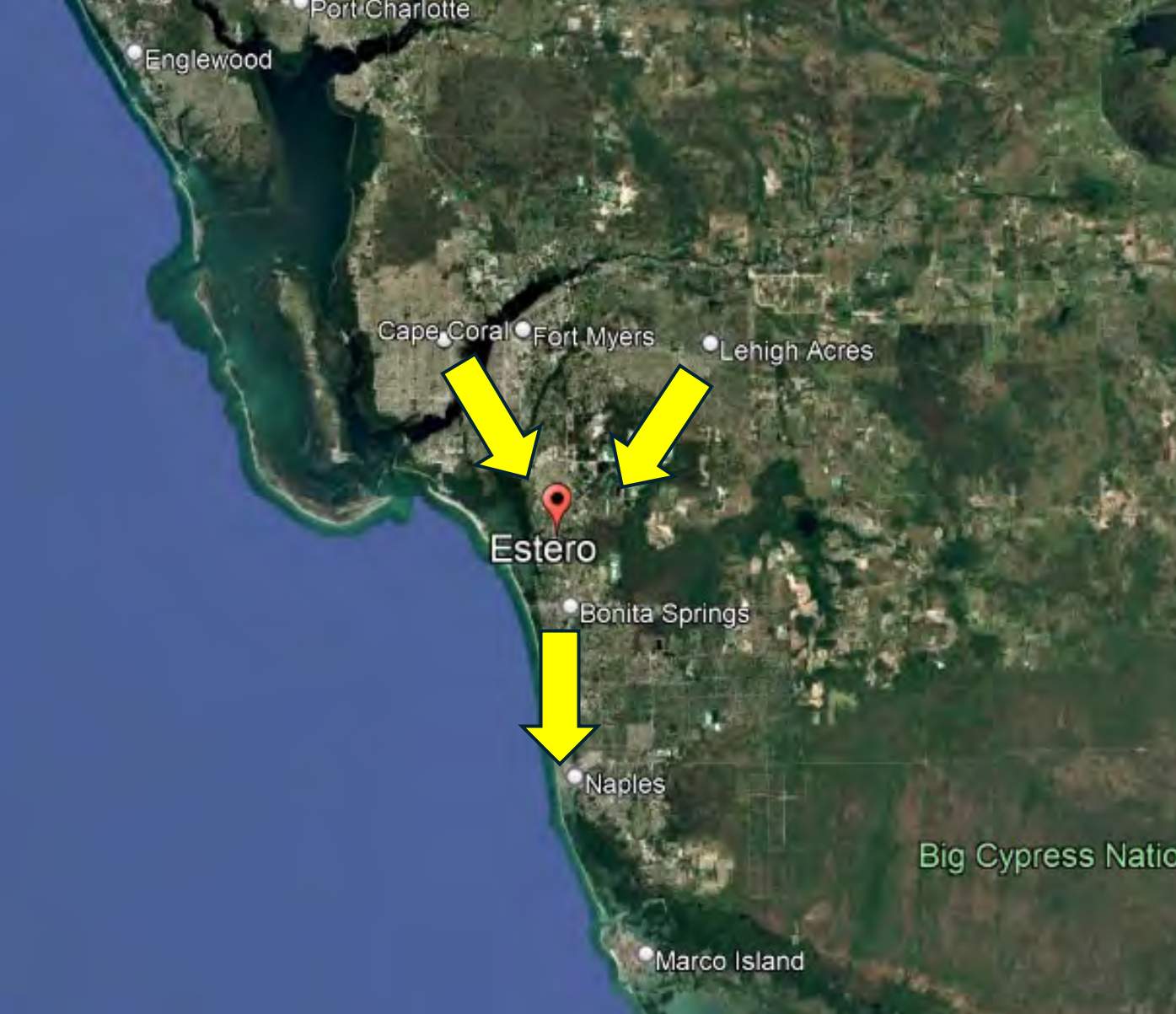


Data Collection



LEGEND

- AREA OF STUDY
- 24HR COUNTS
- AM & PM PEAK HOUR TURNING MOVEMENT COUNTS
- AM, MID-DAY, & PM PEAK HOUR TURNING MOVEMENT COUNTS

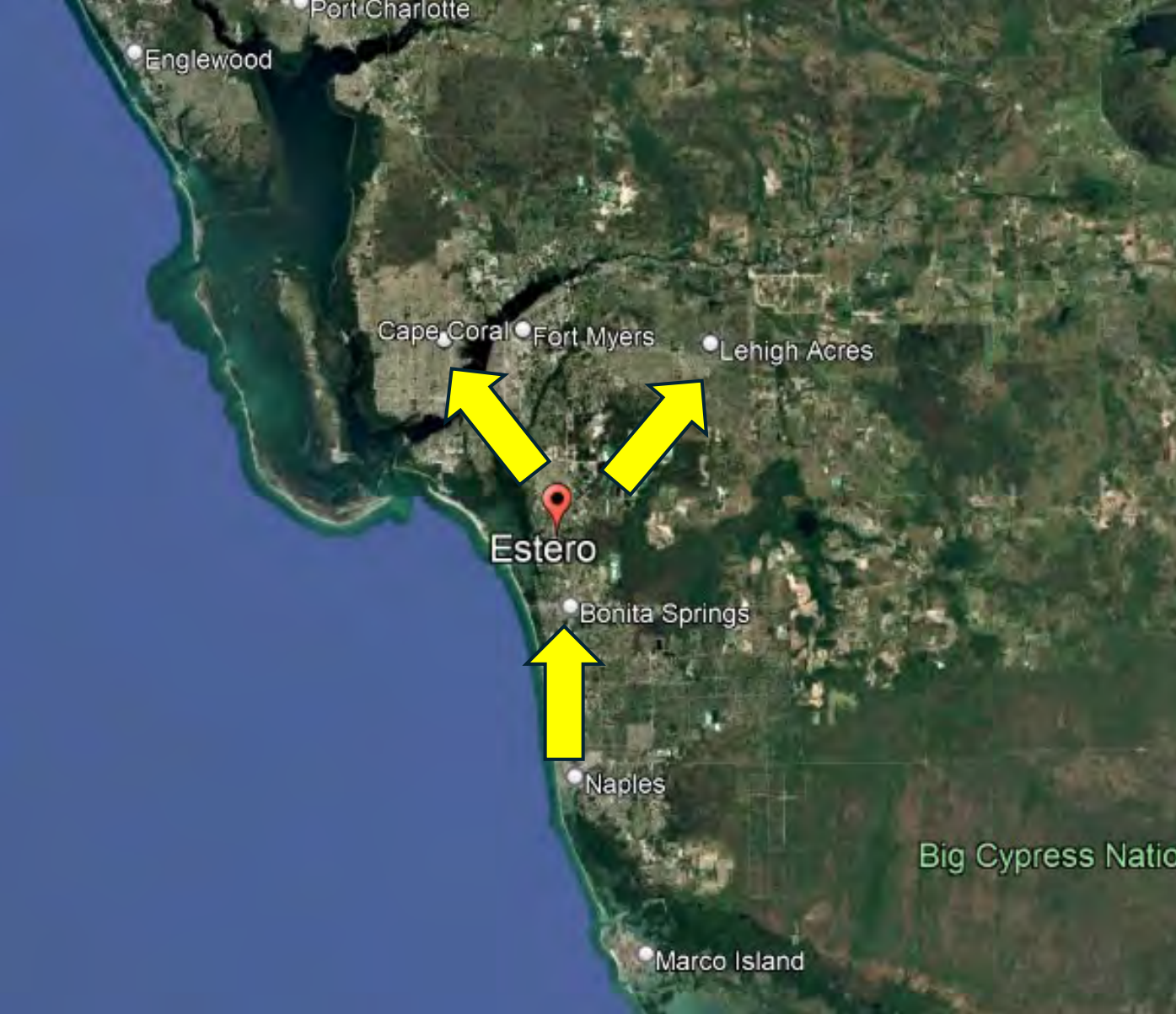


Village of Estero Traffic Flows

VILLAGE OF ESTERO

**Area-Wide Traffic
Study Update**





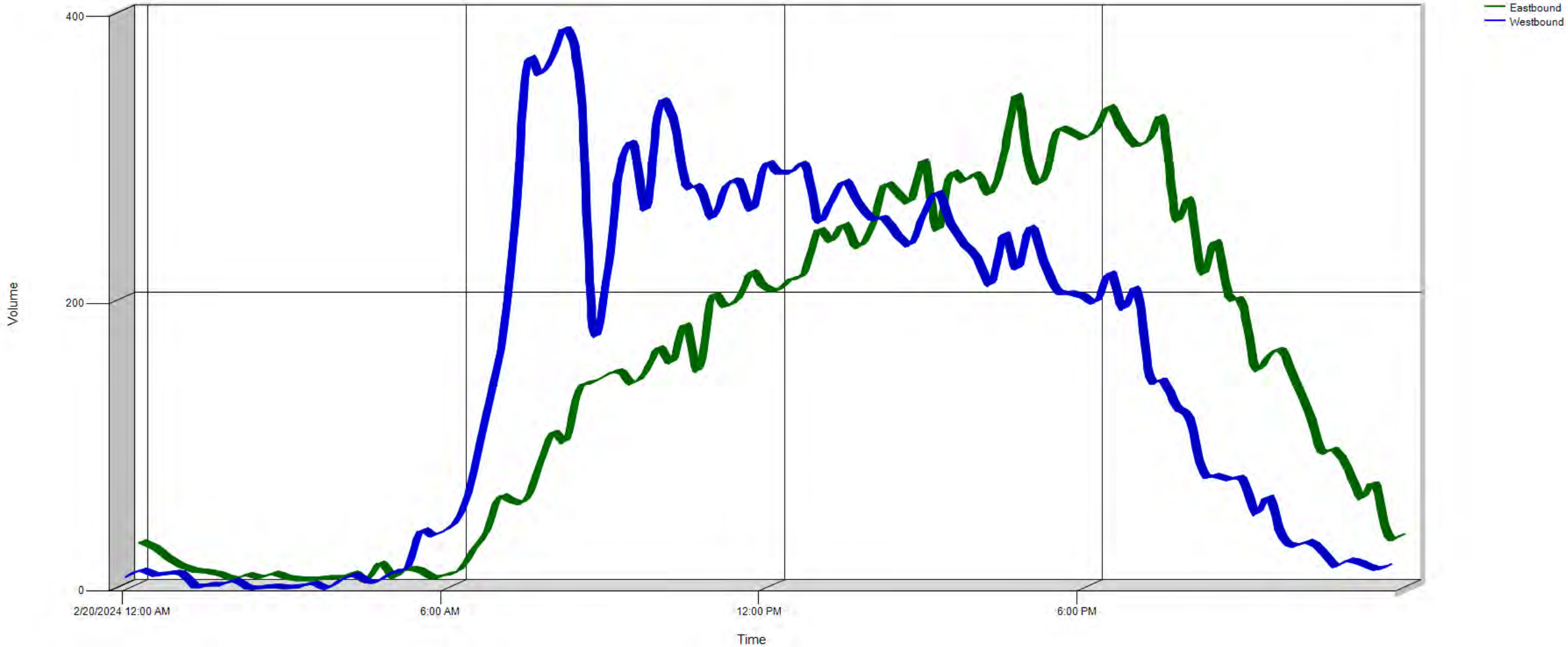
Village of Estero Traffic Flows

VILLAGE OF ESTERO

**Area-Wide Traffic
Study Update**



Corkscrew Road



VILLAGE OF ESTERO

**Area-Wide Traffic
Study Update**

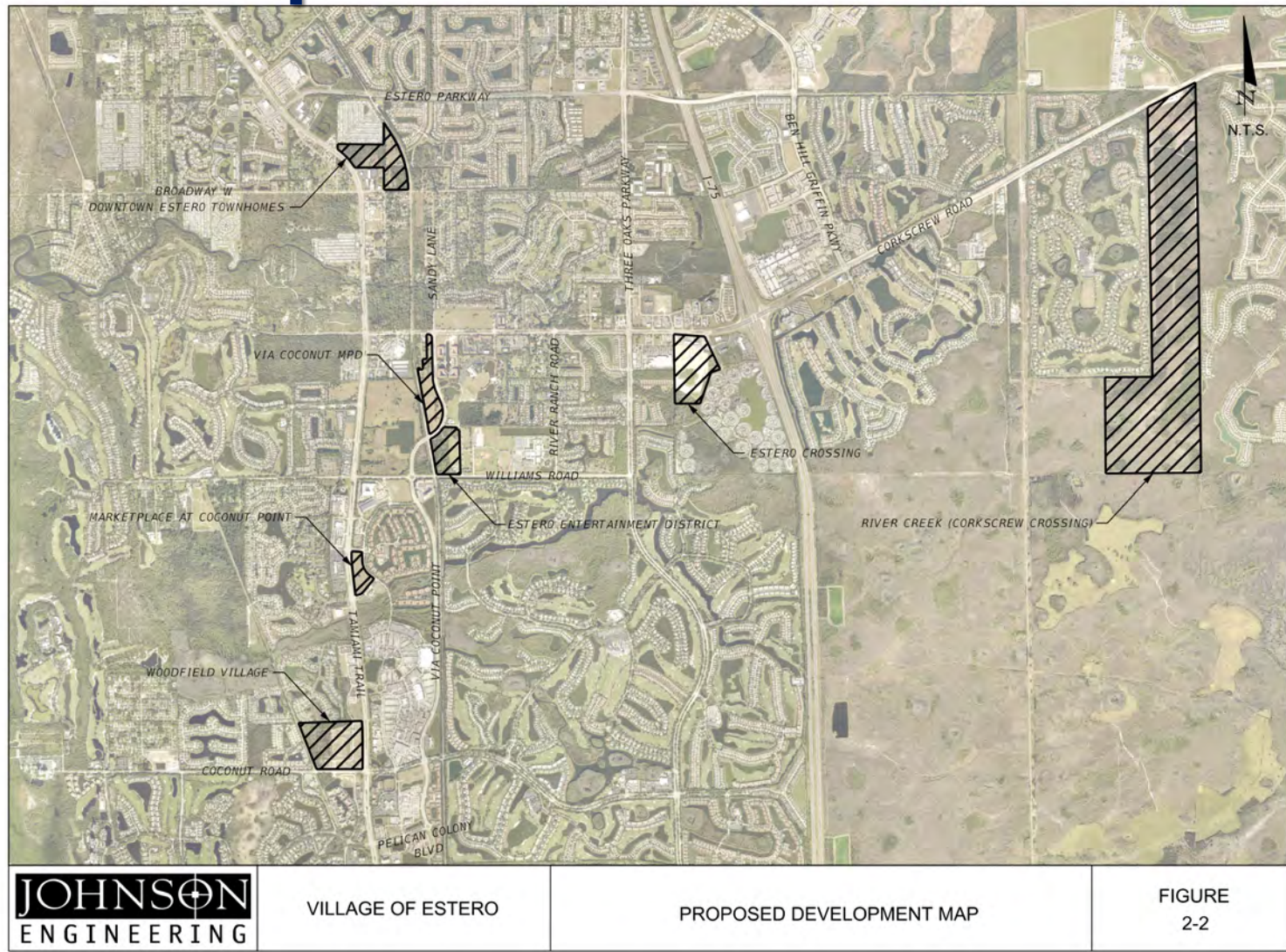
**JOHNSON
ENGINEERING**
— An Apex Company —

Traffic Forecasting

- 2024 Peak Season Baseline Data
- 2034 10-Year Peak Season Projections



Future Development Growth



VILLAGE OF ESTERO

Area-Wide Traffic Study Update

Growth Rates

Growth Rate Determinations for Study Area			
Roadway	From	To	Annual Growth Rate
Tamiami Trail	Within the Village of Estero Limits		1%
Ben Hill Griffin Parkway	Corkscrew Road	Estero Parkway	2.5%
Broadway Avenue West	Yellow Trail	Tamiami Trail	1%
Broadway Avenue East	Tamiami Trail	Sandy Lane	1%
Coconut Road	West End	Spring Creek Road	1%
	Spring Creek Road	Tamiami Trail	1%
	Tamiami Trail	Via Coconut Point	1%
	Via Coconut Point	Three Oaks Parkway	3%
Corkscrew Road	Ben Hill Griffin Parkway	Wildcat Run Drive	3%
Estero Parkway	Tamiami Trail	Three Oaks Parkway	1%
Pelican Colony Boulevard	Tamiami Trail	Via Coconut Point	2%
River Ranch Road	Williams Road	Corkscrew Road	1%
Sandy Lane	Corkscrew Road	Broadway Avenue	1%
Three Oaks Parkway	Williams Road	Corkscrew Road	2.5%
Via Coconut Point	Pelican Colony	Coconut Road	3%
	Coconut Road	Williams Road	3%
	Williams Road	Corkscrew Road	3%
Williams Road	West Way	Tamiami Trail	1%
	Tamiami Trail	Via Coconut Point	1.5%
	Via Coconut Point	Three Oaks Parkway	3%
Spring Creek Road	at Coconut Road		1%
El Dorado Boulevard	at Coconut Road		1%
Via Veneto	at Coconut Road		1%

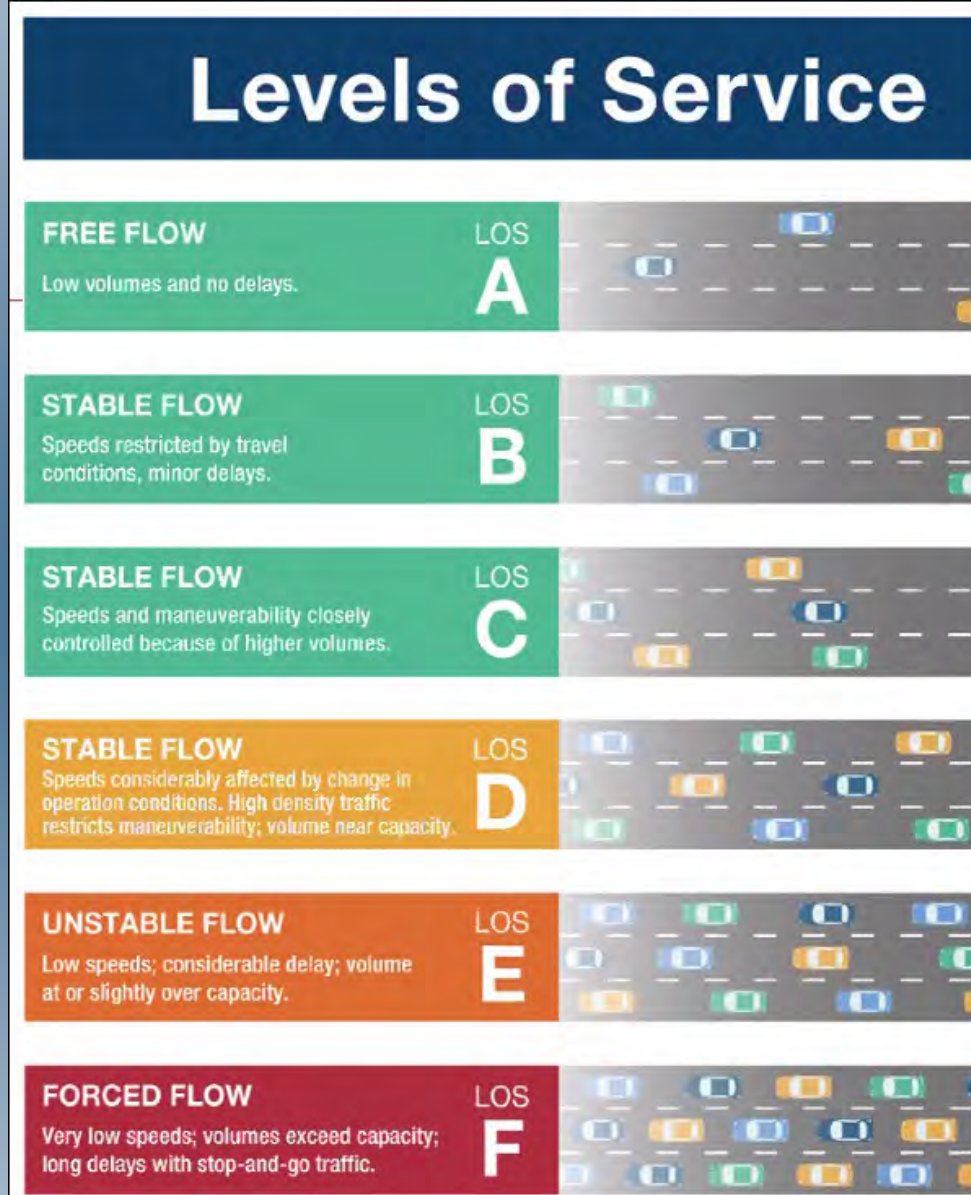


Roadway & Intersection Level of Service

- Collected peak season traffic data to serve at baseline 2024 conditions
- Projected travel demands and patterns to 2034 conditions using growth rates and large future developments



What is Roadway Level of Service (LOS)?



<https://t4america.org/community-connectors/what-they-mean/level-of-service/>

Roadway LOS Analysis

Peak-Hour Village of Estero Roadway Conditions									
Roadway	Segment	Lanes	Performance Standard Peak Hour Two-Way Service Volumes		2024 Roadway Volumes (Two Way)		2024 Roadway Volumes (Two Way)		
			Performance	Capacity	LOS	Volume	LOS	Volume	
Broadway Avenue	West of Tamiami Trail	2	D	1,180	C	668	C	738	
Broadway Avenue	East of Tamiami Trail	2	D	1,180	C	518	C	572	
Coconut Road	Weeks Street to Spring Creek Road	2	D	1,180	C	863	C	953	
Coconut Road	Spring Creek Road to Tamiami Trail	2	D	1,180	C	993	C	1,097	
Coconut Road	Tamiami Trail to Via Coconut	4	D	2,710	C	1,485	C	1,640	
Coconut Road	Via Coconut to Three Oaks	4	D	2,710	C	1,494	C	2,008	
River Ranch Road	Corkscrew Road to Williams	2	D	1,180	B	390	B	431	
Sandy Lane	Broadway Avenue to Corkscrew	2	D	1,180	B	400	B	442	
Via Coconut Point	Pelican Colony Boulevard to Coconut Road	4	D	2,710	B	536	B	720	
Via Coconut Point	Coconut Road to Williams Road	4	D	2,710	C	1,393	C	1,872	
Via Coconut Point	Williams Road to Corkscrew Road	4	D	2,710	B	400	B	538	
Williams Road	West Way to Tamiami Trail	2	D	1,180	C	717	C	792	
Williams Road	Via Coconut Point to Three Oaks Parkway	2	D	1,180	C	1,039	F	1,396	
Pelican Colony Boulevard	Tamiami Trail to Via Coconut Point	4	D	2,710	B	511	B	687	
Spring Creek Road	at Coconut Road	2	D	1,180	B	157	B	173	
El Dorado Boulevard	at Coconut Road	2	D	1,180	B	130	B	144	
Via Veneto	at Coconut Road	2	D	1,180	C	527	B	582	

Roadway LOS Analysis

Peak-Hour Lee County/FDOT Roadway Volumes

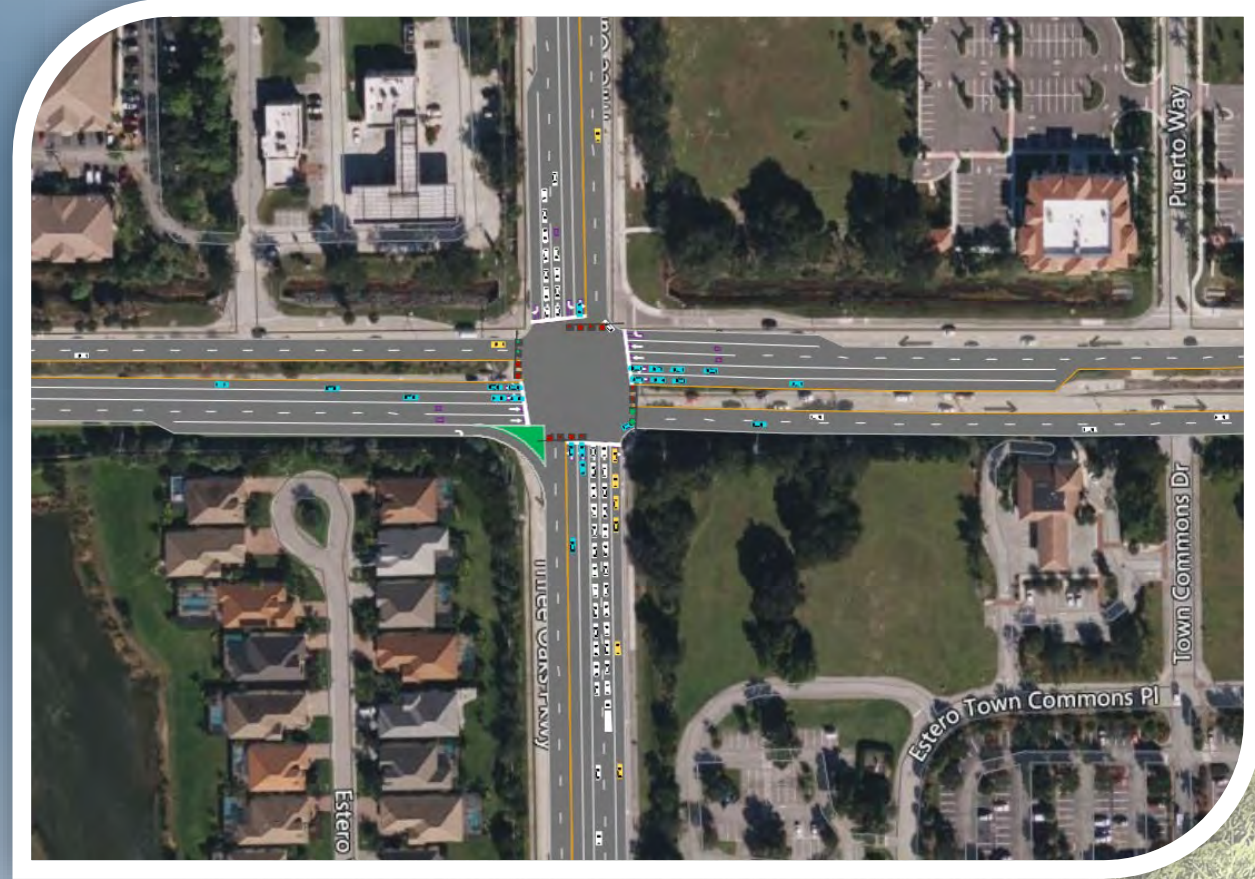
Roadway	Segment	Lanes	Performance Standard Peak Hour Directional Service Volumes		2024 Roadway Volumes (One Way)		2034 Roadway Volumes (One Way)	
			Performance	Capacity	LOS	Volume	LOS	Volume
Tamiami Trail	Within the Village of Estero	6	D	2,814	F	3,134	F	3,462
Ben Hill Griffin Parkway	Corkscrew Road to Estero Parkway	4	E	2,000	D	1,736	F	2,222
Corkscrew Road	Ben Hill Griffin Parkway to Bella Terra	4	E	1,960	D	1,490	F	2,002
Corkscrew Road	Tamiami Trail to I-75	4	E	1,960	D	1,616	F	2,172
Estero Parkway	Tamiami Trail to Three Oaks Parkway	4	E	2,000	C	1,273	D	1,406
Three Oaks Parkway	Williams Road to Corkscrew Road	4	E	1,940	F	1,945	F	2,490

What is Intersection Level of Service (LOS)?

LOS	Control Delay per Vehicle (seconds per vehicle)
A	≤ 10
B	> 10-20
C	> 20-35
D	> 35-55
E	> 55-80
F	> 80

Intersection LOS Analysis

- Intersection LOS
- Average Intersection Delay
- Worst Case Approach LOS
- Worst Case Approach Delay



2024 Intersection LOS Analysis

Signalized Intersections within the study limits include the following:

- Tamiami Trail (U.S. 41) and Estero Parkway **F**
- Tamiami Trail (U.S. 41) and Broadway Avenue **F**
- Tamiami Trail (U.S. 41) and Corkscrew Road **F**
- Tamiami Trail (U.S. 41) and Williams Road **E**
- Tamiami Trail (U.S. 41) and Coconut Road **F**
- Corkscrew Road and Via Coconut Point **F**
- Corkscrew Road and River Ranch Road **B**
- Corkscrew Road and Three Oaks Parkway **F**
- Ben Hill Griffin Parkway and Estero Parkway **E**
- Ben Hill Griffin Parkway and Corkscrew Road **F**
- Ben Hill Griffin Parkway and Everblades Parkway **B**
- Three Oaks Parkway and Coconut Road **F**
- Three Oaks Parkway and Williams Road **D**
- Three Oaks Parkway and Estero Parkway **F**
- Coconut Road and Via Coconut Point **D**

2034 Intersection LOS Analysis

Signalized Intersections within the study limits include the following:

- | | | | |
|---|----------|---|----------|
| ➤ Tamiami Trail (U.S. 41) and Estero Parkway | F | ➤ Ben Hill Griffin Parkway and Estero Parkway | F |
| ➤ Tamiami Trail (U.S. 41) and Broadway Avenue | F | ➤ Ben Hill Griffin Parkway and Corkscrew Road | F |
| ➤ Tamiami Trail (U.S. 41) and Corkscrew Road | F | ➤ Ben Hill Griffin Parkway and Everblades Parkway | C |
| ➤ Tamiami Trail (U.S. 41) and Williams Road | E | ➤ Three Oaks Parkway and Coconut Road | F |
| ➤ Tamiami Trail (U.S. 41) and Coconut Road | F | ➤ Three Oaks Parkway and Williams Road | F |
| ➤ Corkscrew Road and Via Coconut Point | F | ➤ Three Oaks Parkway and Estero Parkway | F |
| ➤ Corkscrew Road and River Ranch Road | C | ➤ Coconut Road and Via Coconut Point | D |
| ➤ Corkscrew Road and Three Oaks Parkway | F | | |

2024 Intersection LOS Analysis

Unsignalized Intersections within the study limits include the following:

- | | | | |
|--|----------|--|---|
| ➤ Tamiami Trail (U.S. 41) and Pelican Sound Drive | F | ➤ Coconut Road and Olde Meadowbrook Boulevard | A |
| ➤ Tamiami Trail (U.S. 41) and Pelican Colony Boulevard | B | ➤ Coconut Road and Spring Creek Road | A |
| ➤ Tamiami Trail (U.S. 41) and Via Rapallo Drive | E | ➤ Corkscrew Road and Cypress Shadows Boulevard | A |
| ➤ Tamiami Trail (U.S. 41) and Fountain Lakes Boulevard | A | ➤ Corkscrew Road and Wildcat Run Road | A |
| ➤ Tamiami Trail (U.S. 41) and Commons Way | D | ➤ Via Coconut Point and Williams Road | C |
| ➤ Ben Hill Griffin Parkway and Tidewater Key Boulevard | A | ➤ Via Coconut Point and Pelican Colony Boulevard | A |
| ➤ Coconut Road and Walden Center Drive | A | | |
| ➤ Coconut Road and Coconut Shores Drive | A | | |
| ➤ Coconut Road and North Commons Drive | A | | |

2034 Intersection LOS Analysis

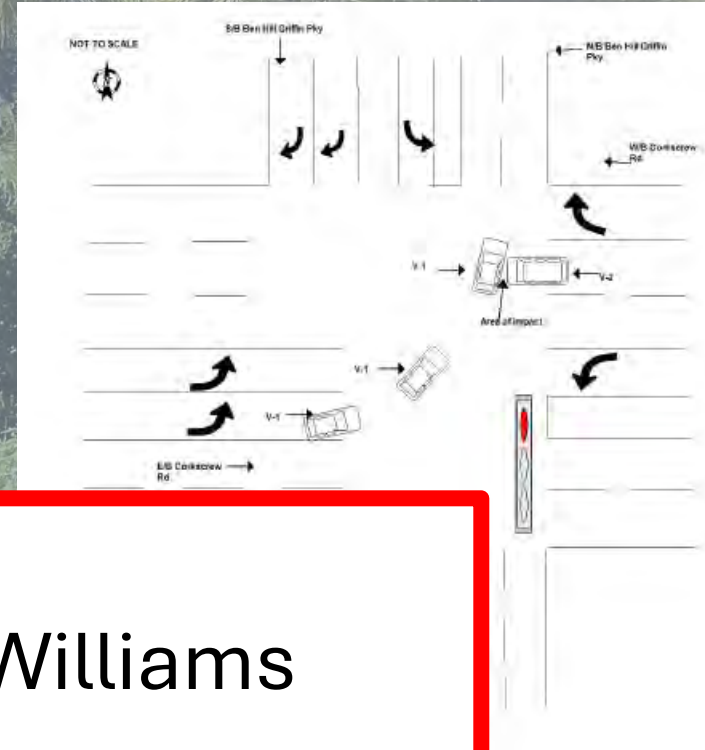
Unsignalized Intersections within the study limits include the following:

- | | | | |
|--|----------|--|----------|
| ➤ Tamiami Trail (U.S. 41) and Pelican Sound Drive | F | ➤ Coconut Road and Olde Meadowbrook Boulevard | A |
| ➤ Tamiami Trail (U.S. 41) and Pelican Colony Boulevard | F | ➤ Coconut Road and Spring Creek Road | A |
| ➤ Tamiami Trail (U.S. 41) and Via Rapallo Drive | E | ➤ Corkscrew Road and Cypress Shadows Boulevard | B |
| ➤ Tamiami Trail (U.S. 41) and Fountain Lakes Boulevard | A | ➤ Corkscrew Road and Wildcat Run Road | A |
| ➤ Tamiami Trail (U.S. 41) and Commons Way | D | ➤ Via Coconut Point and Williams Road | C |
| ➤ Ben Hill Griffin Parkway and Tidewater Key Boulevard | A | ➤ Via Coconut Point and Pelican Colony Boulevard | A |
| ➤ Coconut Road and Walden Center Drive | A | | |
| ➤ Coconut Road and Coconut Shores Drive | A | | |
| ➤ Coconut Road and North Commons Drive | A | | |

Crash Data – 5 Year History

- Corkscrew Road and Three Oaks Parkway – 179
- Tamiami Trail and Estero Parkway – 165
- Tamiami Trail and Corkscrew Road – 158
- Tamiami Trail and Williams Road – 118
- Tamiami Trail and Coconut Road – 105
- Three Oaks Parkway
- Corkscrew Road and

3 Fatalities.
2 Due to left turns onto Williams
Road from Tamiami Trail



Multimodal Impacts



VILLAGE OF ESTERO

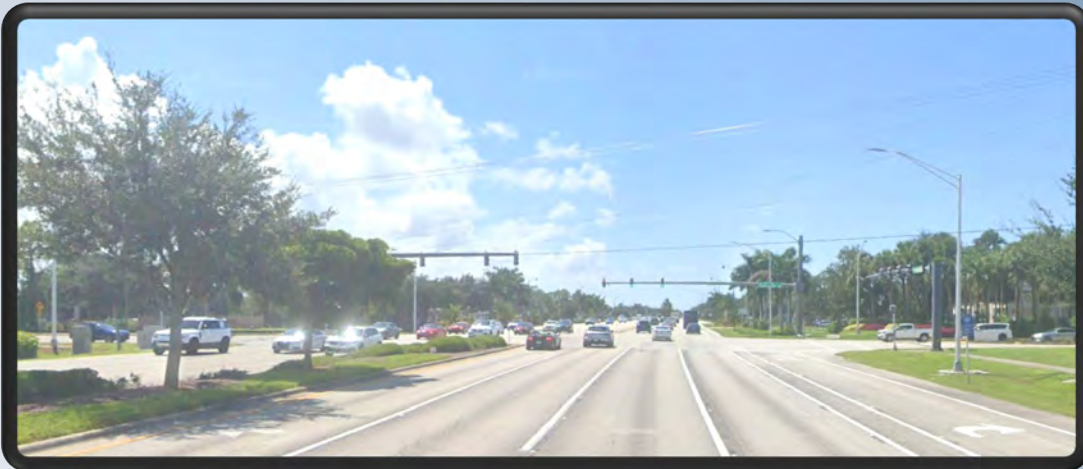
**Area-Wide Traffic
Study Update**

**JOHNSON
ENGINEERING**
— An Apex Company —

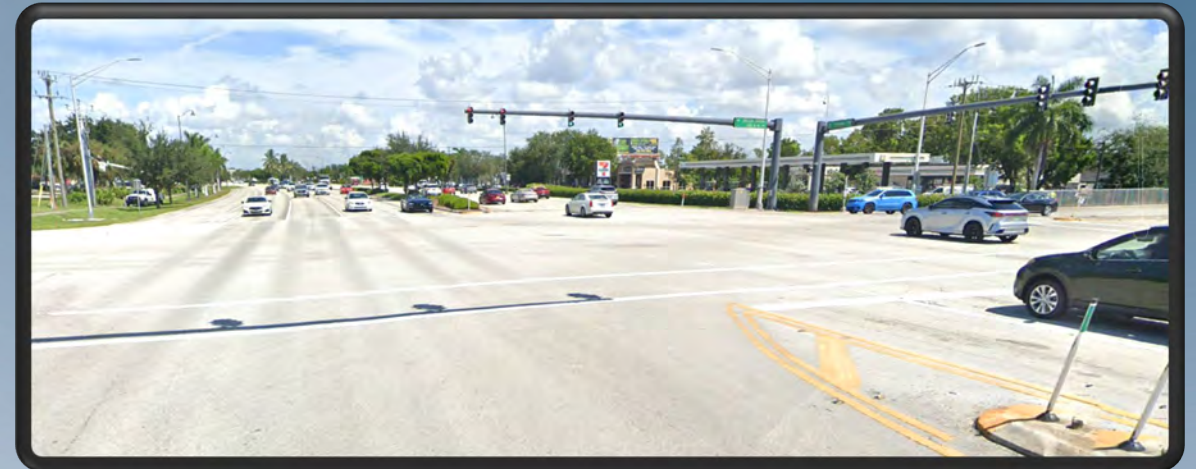
Preliminary Findings

➤ Tamiami Trail

- State maintained constrained roadway
- Monitor signal timings and phasing for improvements



Source: Google Earth



Source: Google Earth

Smart Technologies

- Adaptive Timings
- Adaptive Flows
- Connected Vehicle Technology



Source: Lee County Integrated Corridor Management Plan

Preliminary Findings

➤ Williams Road (Via Coconut Point to Three Oaks Parkway)

- Potential turn lane additions at Three Oaks Parkway
- Potential 2 to 4 lane widening
- Scheduled roundabout addition at River Ranch Road intersection



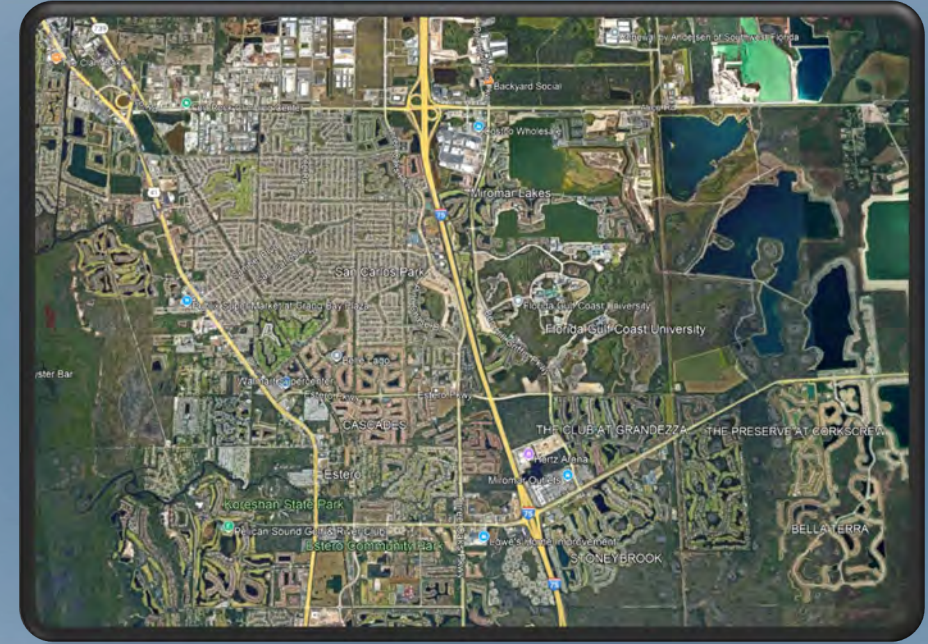
Source: Google Earth



Source: Google Earth

Preliminary Findings

- **Corkscrew Road (Tamiami Trail to I-75)**
 - Lee County Cost Feasible 6-Laning
- **Corkscrew Road (East of Ben Hill Griffin)**
 - Ultimate design planned for the future 6-Laning
- **Three Oaks Parkway**
 - Increase capacity thru Lee County involvement to meet current and future travel demands



Source: Google Earth

Preliminary Findings

➤ Tamiami Trail & Estero Parkway

- Estero Parkway turn lanes insufficient length
- Close the left turn into Walmart and lengthen the dual left turn lanes onto Tamiami Trail (U.S. 41)

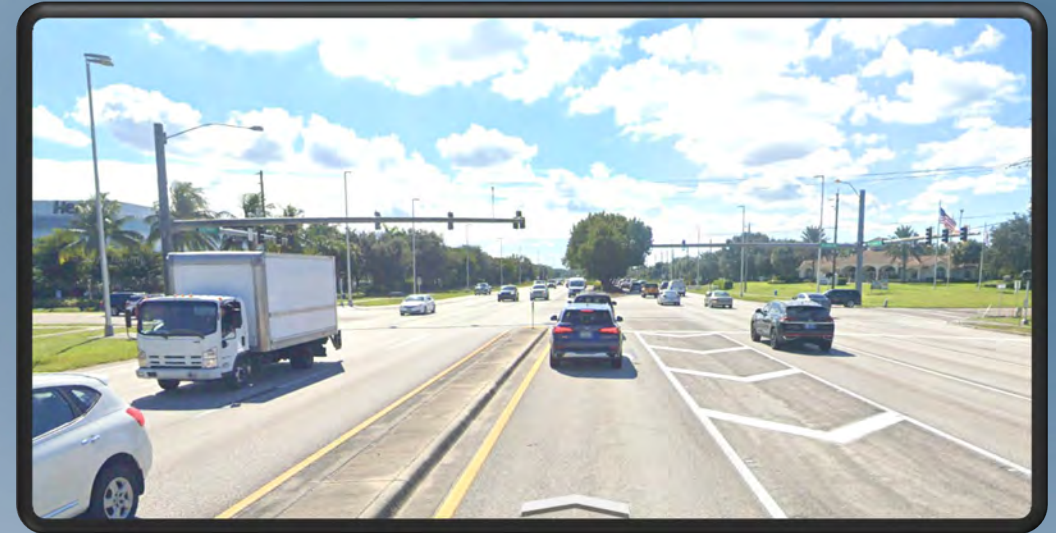


Source: Google Earth

Preliminary Findings

➤ Tamiami Trail & Williams Road

- Add exclusive westbound right turn lane
- Consider protected northbound and southbound left turns to alleviate severe crash risk

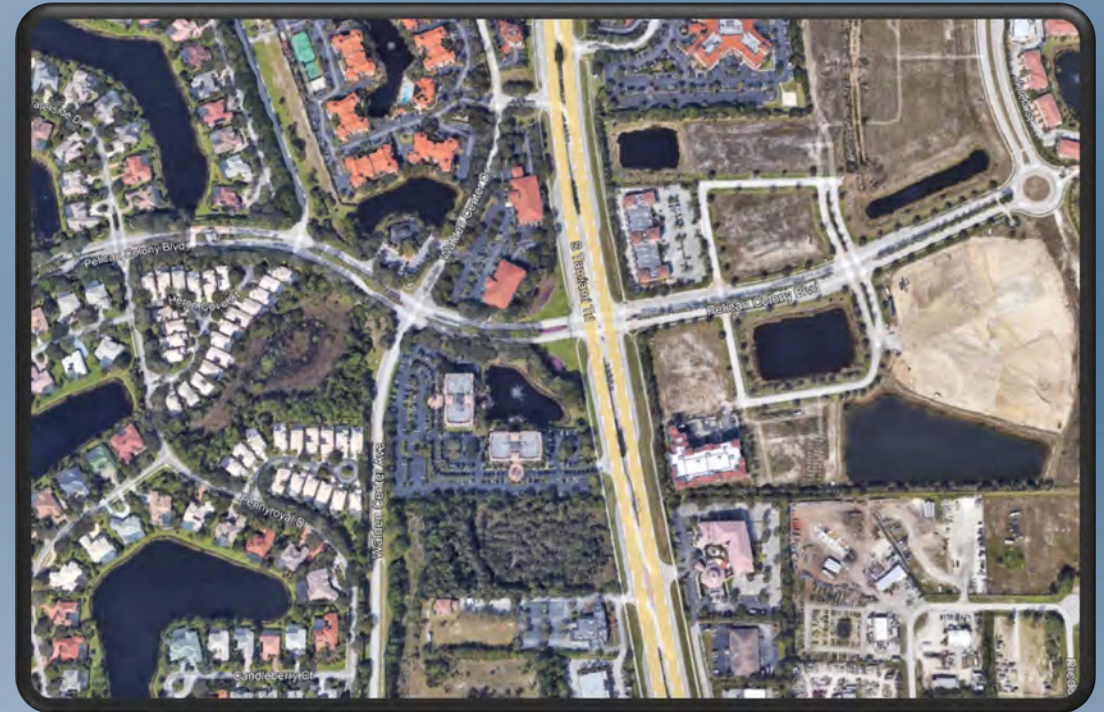


Source: Google Earth

Preliminary Findings

➤ Tamiami Trail & Pelican Colony

- Installation of a traffic signal

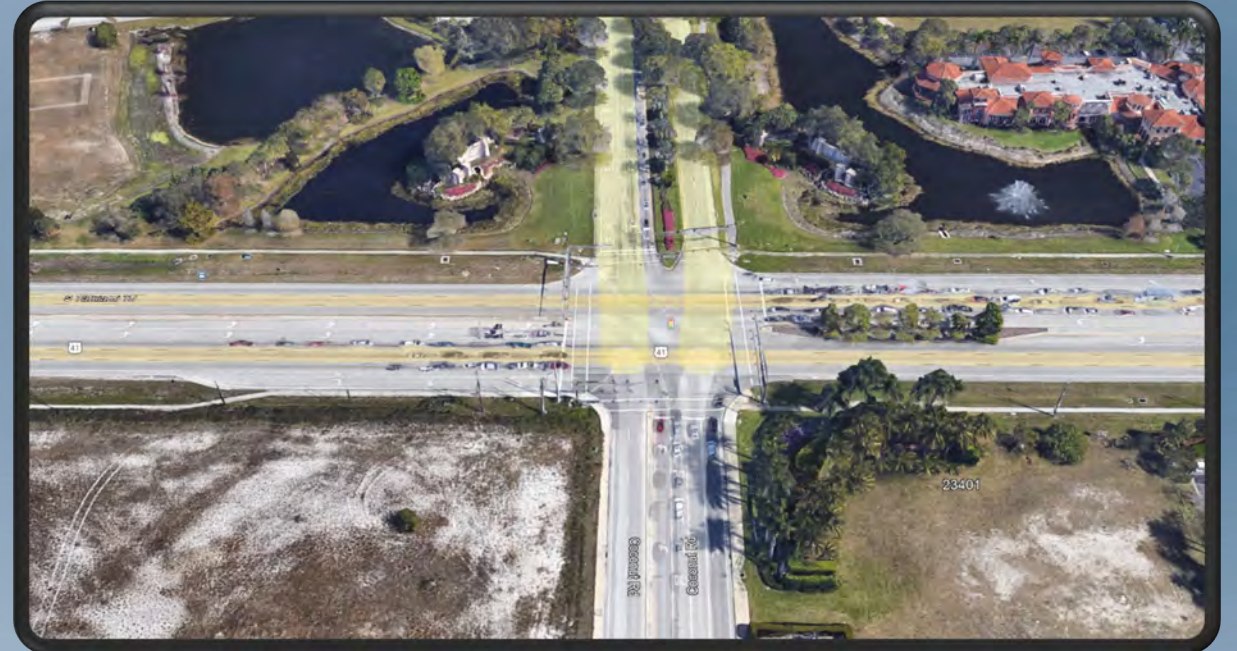


Source: Google Earth

Preliminary Findings

➤ Tamiami Trail & Coconut Road

- Extend westbound left turn lane
- Future Pelican Colony traffic signal may help alleviate traffic congestion at this intersection



Source: Google Earth

Preliminary Findings

➤ Corkscrew Road & Via Coconut Point

- Southbound turn lane improvements could improve capacity.

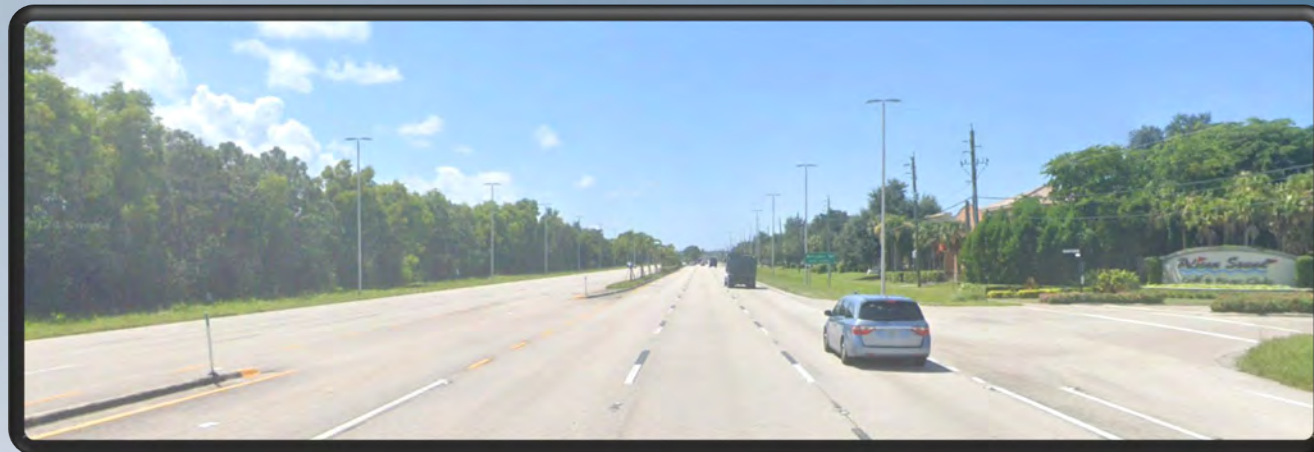


Source: Google Earth

Preliminary Findings

➤ Tamiami Trail & Pelican Sound Drive

- Modify intersection to right-in/right-out to address unprotected movements across Tamiami Trail.
- Potential future signal with development to the east



Source: Google Earth

Preliminary Findings

➤ Tamiami Trail & Via Rapallo Drive

- Recommend completing a signal warrant analysis.



Source: Google Earth

Next Steps



- **Public Input**
- **Additional Stakeholder Involvement**
- **Final Recommendations**



Thank You



VILLAGE OF ESTERO

**Area-Wide Traffic
Study Update**



Questions



The President's Report

Jim Gilmartin
President, Engage Estero.

Engage Estero Plans – 2025-2027

Our Goals: *What we want to achieve*

- ❖ Expand our email list to 15,000, aiming for 20,000 by the end of 2027
- ❖ Increase social media followers to 1,000, targeting 15,000 by 2027
- ❖ Launch podcasts by Q4 of 2025
- ❖ Form an *Engage Estero* research team by June 2025
- ❖ Achieve a funding level of at least \$400,000 over the next three years
- ❖ Maintain a minimum balance of \$750,000 in an escrow account for emergencies
- ❖ Transition Engage Estero into a professionally managed and volunteer-led organization

Engage Estero Plans – 2025-2027

Our Strategies: *How we will meet our goals*

- ❖ Engage with the community for insights
- ❖ Adopt a nonpartisan and unbiased approach
- ❖ Motivate businesses and individuals to invest
- ❖ Ensure a strong return on investment (ROI)
- ❖ Partner with a local research firm to boost research efforts
- ❖ Host networking and informational events to foster connections

General Questions & Comments





Thank You!

**For Your Continuing Support and
Investment in Our Community**

WELCOME



- **Matthew Maher, PE, PTOE, RSP₂₁, Senior Associate, Traffic Engineer, Stantec Consulting**
- **Don Scott, AICP, Executive Director of the Lee County Metropolitan Planning Organization**
- **Carmon Monroy, Senior Transportation Manager, CTS Engineering.**

Improving Road Safety in SW Florida and Greater Estero in Particular



The President's Report

Jim Gilmartin
President, Engage Estero.

Engage Estero News



- ❖ Engage Estero's Don Eslick, Person of the Year Award Feb 27th at 6 pm The Vines – Registrations required.
- ❖ The upcoming Community Meeting on March 26th at The Estero Recreation Center at 10 am. The Results of the Estero Road Traffic Survey Conducted in 2024.
- ❖ The Community Meeting April 22nd at The Estero Recreation Center at 10 am. Covering Pancreatic Cancer Developments, AED's Quicker Availability, Right to Clean Water.

.

Engage Estero News



- ❖ The Reports on the Developments and Urbanization of Greater Estero and The Updated Road Report are now available on our website www.esterotoday.com.
- ❖ Engage Estero's Annual Report is also available on our website
- ❖ New Brochures for HOA's and Gated Communities are available to give to new residents and those who know little about our organization.
- ❖ The EMT is actively involved in explaining the need for and encouraging donations to cover our increasing costs and to provide emergency funding for local residents when required. Our target is for \$400,000 per year in the short to medium term.

.